

# **Late Night**

**a performance by  
blitz theatre group**

**Technical Rider**

**A co-production of  
blitz theatre group  
the Onassis Cultural Centre - Athens  
and La Filature - Scène Nationale Mulhouse**

**Athens 2012**



## SOUND

- 1 wireless microphone with stand (preferably Shure B58)
- 2 Monitors for the stage
- The music of the performance will be played by a sound technician of the theatre, using a CD-player connected to the sound system of the venue
- Below, follows the list of songs that are heard in the performance

Sparkler - Jeans Wilder  
Jazz Suite - D. Sostackovich  
Aqua De Florida - Pascal Comelade  
Masquerade Waltz - A. Khazaturian  
Quasimodo Tango - Ghedalia Tazartes  
Theme de Camille - Georges Delerue - Le Mepris OST  
Midnight, stars and you - Ray Noble Orchestra with Al Bowly  
Unhappy party - Yeong-wook Jo - Sympathy for Lady Vengeance OST  
Over and Done - Mihaly Vig  
Waltz - Toru Takemitsu  
Lassu Tanc - Mihaly Vig  
Lovers are Strangers - Chinawoman  
Prelude in D minor - J.S.Bach  
B2 love - CURD DUCA  
Carnival of souls - Combustible Edison

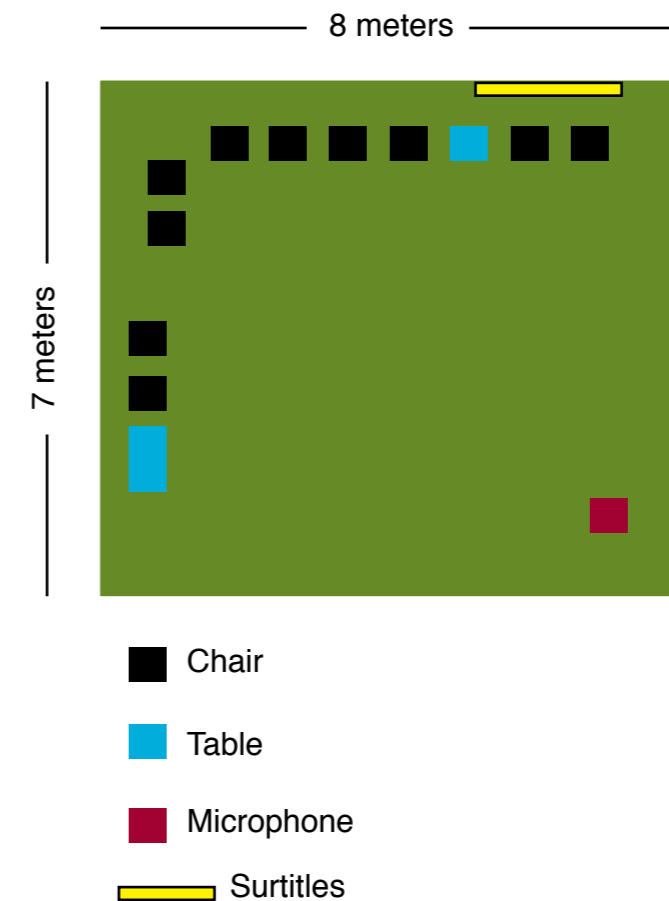
## SCENOGRAPHY

The scenography of LATE NIGHT consists of 10 chairs, 2 small tables, 2 lamps, 1 TV-set, 1 fan, 1 large carpet, a certain quantity of debris and some props. All these will be provided by us

- For the scenography, we need **RISERS** with dimensions **7 meters depth - 8 meters width**. The height of the risers should be 20 - 40cm (maximum). The idea is to create a platform on the stage. On these risers, the carpet will be glued with adhesive tape
- 1 DVD-player
- We also need 3 plugs 220 Volt on stage for electronic devices - a TV set, the DVD-player and 1 fan

## SURTITLES

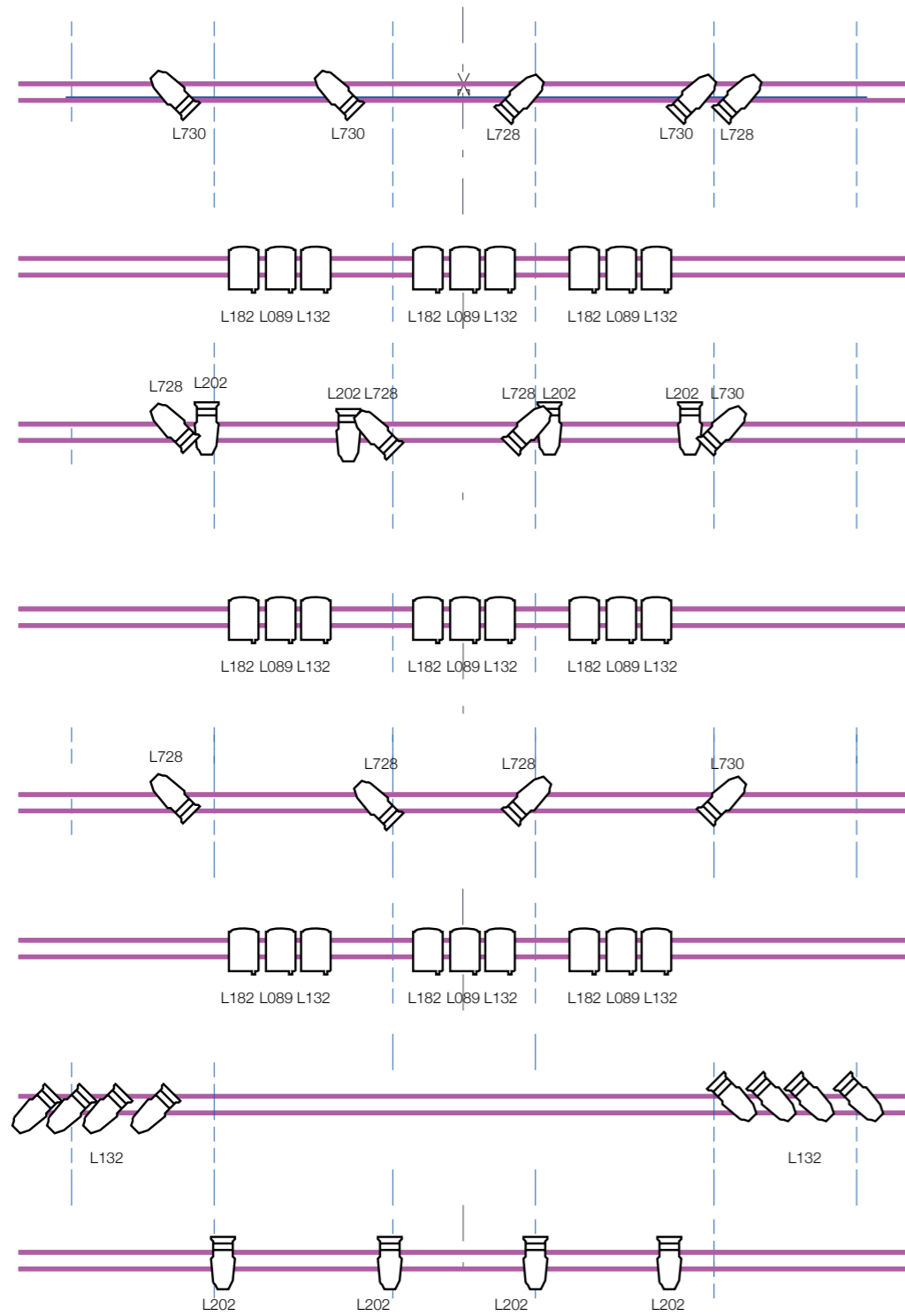
For the surtitles, we will need **1 projector**, pointing at the right side of the stage



## LIGHT

a. 2 plugs on stage connected with the dimmers

b. Below, follows the lighting plot of the performance



## CONTACTS

For more information and/or questions please contact us at

[blitz@theblitz.gr](mailto:blitz@theblitz.gr)

Christos Passalis 0030 6978822565

<b>BLITZ</b> THEATER GROUP		
	PC 1000W	ETC source four zoom 25-50
	Late Night_General Plan Lighting design by Tasos Palaoroutas	