

6am. How to disappear completely

Technical Rider

Contacts:

Giannis Ntovas - Stage Manager

j.ntovas@sgt.gr

Christos Passalis - Director

christospassalis@gmail.com
0030 6978 822565

Judith Martin - Producer, Tour manager

info@lignedirecte.net
0033 670634758

Please email all the up to date technical documentation to the production and tour manager at the earliest possible time. Scale drawings and plans are to be provided. The preferred file format is .dwg. Please send along accompanying .pdf files with a scale bar.

- a. Architectural drawings including section and plan views
- b. Seating Plan
- c. Stage Plan
- d. Pictures of:
 1. The empty stage
 2. The stage floor
 3. The back wall
- e. Rigging points
- f. Standard Hanging Plot
- g. Inventory of Lighting Equipment
- h. Inventory of Audio Equipment
- i. Details on your Surtitles Set/ Software/ Projection etc
- j. Regulations (noise levels, fire codes etc.)
- k. Venue Contact Details

Production Schedule

DAY 0

Arrival of artists and visiting the venue

DAY 1 SET UP

LOAD IN/SET UP STAGE

SET UP SOUND

SET UP/FOCUS LIGHTS

SET UP VIDEO PROJECTOR (Surtitles)

DAY 2 SET UP+ REH

Focus-Programming Lights/Set Corrections

Soundcheck

Technical Rehearsal

Dress Rehearsal + Surtitles

DAY 3 SET UP+ REH+SHOW

Tech Corrections

Technical Run Through

Soundcheck

Stage Preparation-Make up/Costumes

General Rehearsal + Surtitles

Preset-props, check lights, sound

House Open/ Audience entrance

SHOW (70 minutes no interval) + Surtitles

DAY 4 REH + SHOW

Set and Tech Corrections

Lunch Break

Rehearsal/ Sound Check

Preset stage props, check lights & sound

House Open/ Audience entrance

SHOW (70 minutes no interval) + Surtitles

LOAD OUT (approximately 6 hours)

Any information particular to the functioning of your venue is most welcome. Such as policy on latecomers, prearranged breaks for your technical crew etc.

A more specific work schedule will be provided according to the venue specs.

LOCAL CREW required

- 3 light technicians/operators to rig and focus the lights
- 2 sound technicians/operators for set up
- 1 flyman
- 4 stage technicians
- 1 stage manager to communicate with the Front of House,
- 1 wardrobe maintenance person

SHOW CREW

- 1 qualified lighting operator who is familiar with the lighting console and equipment
- 1 sound operator who is familiar with the sound console and equipment
- 4 stage technicians who are familiar with the venue
- 1 wardrobe maintenance person who is familiar with the venue
- 1 flyman

Theatre provides:

- A completely empty and clean stage, free of legs
- The stage floor should be even and in perfect shape
- All stage bars must be completely free and in good working condition
- Minimal stage depth: 15 mtr.
- Minimal grid height: 18 mtr.
- Minimal stage width: 18 mtr.
- Minimal portal width: 15 mtr.
- Minimal portal height: 8 mtr.
- Necessary grid or fly bars to hang both set and lights.
- Spare set of legs and the necessary weighting tubes, only upon request.
- Spare set of borders and the necessary weighting tubes, only upon request.
- One (1) seamless white cyclorama
- One (1) seamless black traveler with a middle opening
- Black rope 8mm adjustable on theaters height
- Rollers for 8mm rope
- Rollers and double rollers for 6mm rope

Company provides:

- Brown carpet/moquette

FLOOR:

The stage floor, off-stage and backstage areas must be clean and free of nails, tacks, staples, splinters and any other protrusions or objects that might cause injuries. We need the stage to be very clean and tidy, please reserve the necessary time to clean up the stage before our arrival.

TECHNICAL SPECIFICATIONS of set

-Scenery consists of metal elements-scaffold and metal wheel tower-and of metal objects that are hanged to the flying bars, see photos attached.

-Floor: 18 pieces of brown plastic floor with sand on it. The floor needs to be stapled in specific points to the stage floor

Important :

-3 fly bars should be totally fixed so the performers can move the hanged items without disturbing the rest of the fly bars

-Stones and snow are being thrown during the show. For each effect we use 2 different fly bars

- Black borders and legs, totally flat and stretched, will be needed for the masking of the props and side lights. The heights of the flying bars and the masking will be decided on site, depending on the dimensions of the stage and auditorium.

- Props, see photos attached.

Theatre provides:

-9V batteries

LIGHT

Note that the lighting plan will be adjusted to the venue's capacities.

Theatre provides:

- Filters used are L650, 643 and R201, 202,203, 140,241,132,711 and Rsteel green
- For LX, two side fly bars set at 6.3m
- 2 Haze smoke machines
- 1 jem smoke machine

- Power Supply for:
- 7 metal objects with led string light on hanged from fly bars.
- 2 pieces of electromagnets for holding two trees up hanged from fly bars, the control needs to be situated on the floor
- Neon light sign hanged from a fly bar

Important :

- Ventilation of stage must be off during the performance in order not to dissolve the smoke and ruin the effect.

- The smoke runs throughout in a specific moment of the performance. Please check with theatre safety whether the smoke detectors need to be disabled.

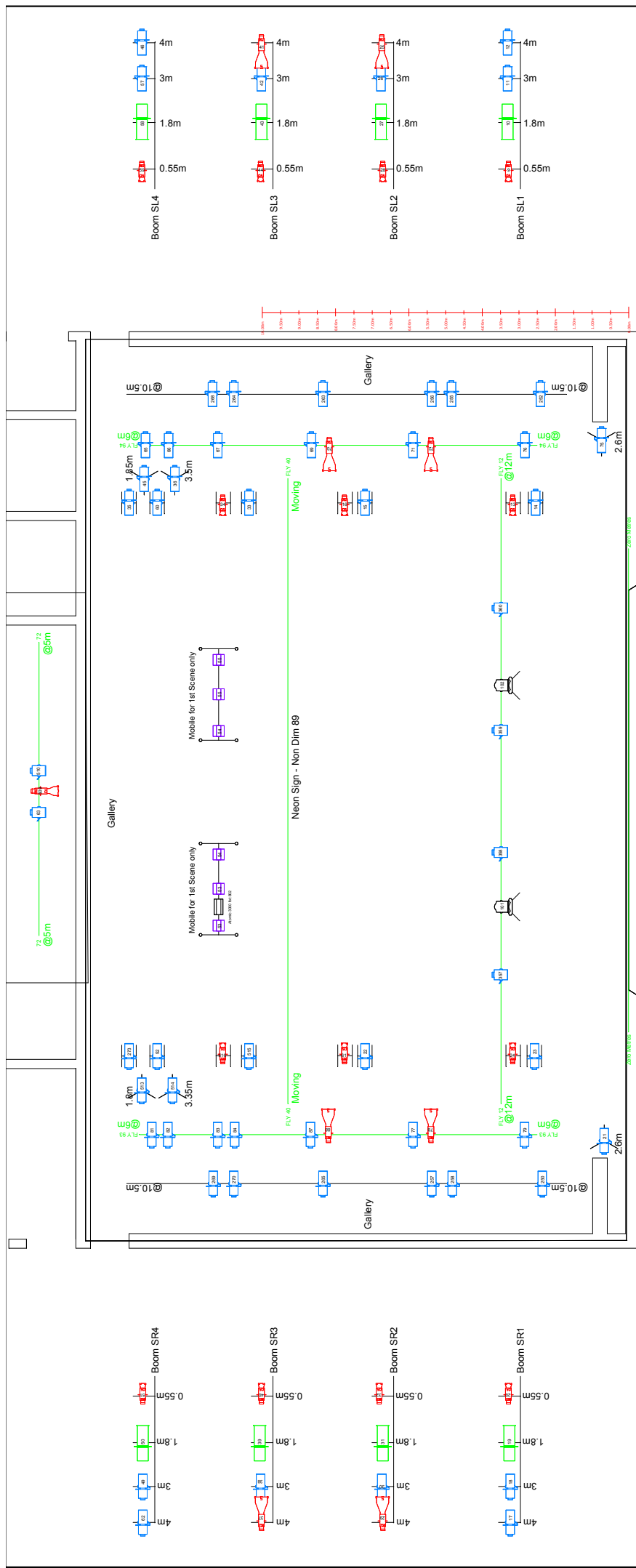
Company provides:

-7 metal items part of the scenery hanged from fly bars with led string lights on-non dim

-neon light sign hanged from flybar

All our equipment uses 220V / 50Hz and is wired with European continental SCHUKO 16A plugs. For any other kind of power or wiring with local plug, the theatre must provide the necessary amount of converters from the local standard to either SCHUKO or CEE 16A.

Note: Company can appreciate information about a neon lights shop close to theater in case of damage



Symbol	Name	Count	Wattage	Lens
	Zoom 15/38	57	1200	
	Zoom 38/57	8	1200	
	Fresnel 2,5KW HMI	2	2000	
	Fresnel	6	2000	
	CE Source 4 750	8	750	5 Degree
	CE Source 4 750	1	750	10 Degree
	CE Source 4 750	4	750	36 Degree
	CE Source 4 750	14	750	50 Degree
	Asymmetric Flood	6	1000	
	Atomic 3000 Strobe	1	3600	

BLITZ - 6AM

Lighting Plan - not to scale

SOUND/ INTERCOM/ VIDEO

(please see the attached files)

Theatre provides:

PA SYSTEM

32 x d&b T10 L-R stack plus L-R FLOWN
8 x sub B4 mono separate send
Full surround system

MONITORING

2 x d&b E12 flow(back)-2 separate sends
4 x d&b max12 on stands-2 separate sends

AUDIO MIXER

DIGIDESIGN PROFILE

Minimum needs:32 in-24 out
- The mixing board must be in the auditorium
No cable running through the stage.

MICS

7 x wireless body pack UR 1M
7 x skin colour headset mic dba 4065
1 x wireless body pack+ skin colour headset mic (spare)
full wireless system (receivers-booster-antennas)
Two in house sound engineers are required to help with the set up
Intercom: 1 belt pack on stage linked with light position, sound position, flyman and 5 wireless belt packs for stage technicians
- A show relay speaker for the dressing rooms

Company provides:

-2 x macbook pro laptops running ableton live 8
-1 x M-Audio 8 channel sound card

-Company's assistant director that does the sound cues, is positioned next to the auditoriums sound console (please reserve the appropriate seat)

VIDEO

Theatre provides:

- A show relay video monitor of the stage is required next to the stage managers desk
- Surtitle system and operator is required in charge of the Theatre

(Software of the text: power point)

Note that the surtitles will be adjusted to the venue's surtitling system

WARDROBE (see list attached)

Note: Some of the costumes must be dry-cleaned after 2 performances